

One's motor performance predictably modulates the understanding of others' actions through adaptation of premotor visuo-motor neurons

Journal:	<i>Social Cognitive and Affective Neuroscience</i>
Manuscript ID:	SCAN-10-055.R2
Manuscript Type:	Original Manuscript
Date Submitted by the Author:	22-Oct-2010
Complete List of Authors:	Cattaneo, Luigi; University of Trento, Center for Mind/Brain Sciences Barchiesi, Guido; University of Trento Tabarelli, Davide; University of Trento Arfeller, Carola; University of Trento Sato, Marc; University of Grenoble Glenberg, Arthur; Arizona State University
Keywords:	Transcranial magnetic Stimulation, Adaptation, Action Understanding, Mirror Neurons, Premotor Cortex, cross-modal adaptation

SCHOLARONE™
Manuscripts

1
2
3 **TITLE:** One's motor performance predictably modulates the understanding of others'
4 actions through adaptation of premotor visuo-motor neurons.
5
6
7
8
9

10 **Authors:** Luigi Cattaneo¹, Guido Barchiesi¹, Davide Tabarelli¹, Carola Arfeller¹, Marc
11 Sato² & Arthur M Glenberg³
12
13

14
15 ¹*Center for Mind/Brain sciences, University of Trento, Via delle Regole 101, Mattarello –*
16
17 *Trento 43123, Italy.*

18
19
20 ²*GIPSA- lab, Centre National de la Recherche Scientifique & Grenoble Universités,. 961*
21 *rue de la Houille Blanche BP 46 F - 38402 GRENOBLE - France*
22
23

24
25 ³*Arizona State University and University of Wisconsin. ASU Psychology Building, 950 S.*
26 *McAllister, Room 237 | P.O. Box 871104, Tempe, AZ 85287-1104 – USA*
27
28
29
30

31 **Running head:** Motor-visual aftereffects
32

33
34 **Corresponding Author:**

35 Luigi Cattaneo
36

37 Center for Mind/Brain Sciences, University of Trento
38

39 Via delle Regole 101, 38123 Mattarello – Trento, Italy.
40
41

42 Email: luigi.cattaneo@unitn.it
43

44 Tel and fax: +39-0461-882743
45
46

47
48 **Keywords:** Transcranial magnetic Stimulation; Adaptation; Action Understanding;
49
50 Mirror Neurons; Premotor Cortex; Cross-modal adaptation.
51
52

53
54
55 **Total word count:** 4995
56
57
58
59
60

ABSTRACT

1
2
3
4
5
6
7
8
9
10
11
12
13
14
15
16
17
18
19
20
21
22
23
24
25
26
27
28
29
30
31
32
33
34
35
36
37
38
39
40
41
42
43
44
45
46
47
48
49
50
51
52
53
54
55
56
57
58
59
60

Neurons firing both during self and other's motor behavior (mirror neurons) have been described in the brain of vertebrates including humans. The activation of somatic motor programs driven by perceived behavior has been taken as evidence for mirror neurons' contribution to cognition. The inverse relation, i.e. influence of motor behavior on perception, is needed for demonstrating the long-hypothesized causal role of mirror neurons in action understanding. We provide here conclusive behavioral and neurophysiological evidence for that causal role by means of cross-modal adaptation coupled with a novel transcranial magnetic stimulation (TMS)-adaptation paradigm. Blindfolded repeated motor performance of an object-directed action (push or pull) induced in healthy participants a strong visual aftereffect when categorizing others' actions, as a result of motor-to-visual adaptation of visuo-motor neurons. TMS over the ventral premotor cortex, but not over the primary motor cortex, suppressed the aftereffect, thus localizing the population of adapted visuo-motor neurons in the premotor cortex. These data are exquisitely consistent in humans with the existence of premotor mirror neurons that have a direct access to the action meaning. We also show that controlled manipulation of the firing properties of this neural population produces strong predictable changes in the way we categorize others' actions.

INTRODUCTION

1
2
3
4
5
6
7
8
9
10
11
12
13
14
15
16
17
18
19
20
21
22
23
24
25
26
27
28
29
30
31
32
33
34
35
36
37
38
39
40
41
42
43
44
45
46
47
48
49
50
51
52
53
54
55
56
57
58
59
60

Considerable evidence has built up in the recent years showing that somatic and visceral motor programs are activated and modulated by observation of others' behavior (Avenanti, Bolognini, Maravita, & Aglioti, 2007; Cattaneo, Caruana, Jezzini, & Rizzolatti, 2009; Dimberg, Thunberg, & Elmehed, 2000; Fadiga, Fogassi, Pavesi, & Rizzolatti, 1995; Gangitano, Mottaghy, & Pascual-Leone, 2001; Stefan et al., 2005; Strafella & Paus, 2000; Watkins, Strafella, & Paus, 2003; Wicker et al., 2003). The neural substrate for this matching between non-self and self has been identified in multimodal neurons called mirror neurons, that have now been recorded in humans (Mukamel, Ekstrom, Kaplan, Iacoboni, & Fried, 2010), non-human primates (Fogassi et al., 2005; Gallese, Fadiga, Fogassi, & Rizzolatti, 1996; Kraskov, Dancause, Quallo, Shepherd, & Lemon, 2009) and in non-mammalian vertebrates (Keller & Hahnloser, 2009; Prather, Peters, Nowicki, & Mooney, 2008). This mirror mechanism, by which action and perception are linked, seems to be widespread in the central nervous system (Gazzola & Keysers, 2008; Keysers & Gazzola, 2009; Mukamel et al., 2010; Turella, Erb, Grodd, & Castiello, 2009). According to the mirror mechanism hypothesis, the goal of others' actions is at least in part understood by its match to elements of one's own motor repertoire. There are two implications of this hypothesis: 1) vision of another's action modulates one's own motor system and 2) vice-versa motor activity affects action perception (Schutz-Bosbach & Prinz, 2007). Several experiments have now confirmed the finding that the observers' motor system resonates to action observation (Avenanti et al., 2007; Cattaneo et al., 2009; Desy & Theoret, 2007; Fadiga et al., 1995; Koch et al., 2010; Maeda, Kleiner-Fisman, & Pascual-Leone, 2002; Strafella & Paus, 2000; Urgesi, Candidi, Fabbro, Romani, & Aglioti, 2006), however, the bi-directionality of the mirror mechanism is less clear. The experiments dealing with this topic indeed have shown a wide range of effects, from interference to facilitation (see Schutz-Bosbach & Prinz,

1
2
3 2007) and the interpretation of such a variable phenomenology remains largely
4
5 hypothetical. Some studies show an effect of body position in space or of limb posture
6
7 on the perception of others' bodily movements (Alaerts, Heremans, Swinnen, &
8
9 Wenderoth, 2009; Alaerts, Swinnen, & Wenderoth, 2009). In these works congruent body
10
11 posture facilitated motor resonance to observed actions as measured by motor evoked
12
13 potentials. Other studies showed online effects of action on perception as a contrast or
14
15 interference effects of action on congruent visual stimuli (Miall et al., 2006; Musseler &
16
17 Hommel, 1997; Musseler, Steininger, & Wuhr, 2001; Zwickel, Grosjean, & Prinz, 2007,
18
19 2010a, 2010b) or as online facilitation of concurrent performed hand postures and
20
21 observed actions (Blaesi & Wilson, 2010). Evidence in favor of an effect of movement on
22
23 action perception is still however under-represented and controversial compared to the
24
25 well-established observation-execution phenomenology and this certainly contributes to
26
27 the debate as to whether the motor system really mediates action understanding
28
29 (Rizzolatti & Sinigaglia, 2010).

30
31
32
33
34
35
36 A recent innovation in the study of the human mirror mechanisms is that of
37
38 investigating cross-modal effects on action and vision. The rationale for this approach is
39
40 that the firing of a multimodal neuron is modified by its preceding input in any of the two
41
42 modalities to which it responds. Then, effects of its firing history driven by history in one
43
44 modality can be observed in the other modality. This approach has been exploited mainly
45
46 using the imaging technique of repetition-suppression, which is the decrease in Blood
47
48 Oxygen Level-Dependent signal to repeated stimuli (Grill-Spector, Henson, & Martin,
49
50 2006). The repetition-suppression paradigm has yielded various results, from no cross-
51
52 modal adaptation at all (Dinstein, Hasson, Rubin, & Heeger, 2007), to asymmetric
53
54 adaptation (Lingnau, Gesierich, & Caramazza, 2009), up to full two-way cross-modal
55
56 adaptation (Chong, Cunnington, Williams, Kanwisher, & Mattingley, 2008; Kilner, Neal,
57
58 Weiskopf, Friston, & Frith, 2009). Nonetheless, because imaging studies produce
59
60

1
2
3 correlational data, the findings cannot provide evidence of the causal role of a visuo-
4
5 motor matching mechanism in the process of action cognition.
6
7

8 In the first experiment we sought to elicit the behavioral correlate of cross-modal
9
10 adaptation. The hypothesis that was tested is that mirror neurons would be adapted by the
11
12 repetition of motor acts, and that this adaptation would be evident as a loss in function of
13
14 visual recognition of actions congruent with motor training. Clear cross-modal motor-to-
15
16 perception adaptation effects have already been demonstrated in the linguistic domain
17
18 (Glenberg, Sato, & Cattaneo, 2008). In the second, main experiment, we then used a
19
20 novel Transcranial Magnetic Stimulation (TMS)-adaptation paradigm (Silvanto,
21
22 Muggleton, & Walsh, 2008) to investigate the causal role of mirror mechanisms in action
23
24 recognition. This paradigm is based on the notion that the effects of TMS are state-
25
26 dependent, i.e. they depend on the initial activity state of the stimulated neurons. Thus,
27
28 manipulating the firing of subsets of neurons by means of perceptual or motor adaptation
29
30 allows selective stimulation of those neuronal populations with TMS even when the
31
32 adapted neurons are spatially overlapping with other cells.
33
34
35
36
37
38
39
40
41
42
43
44
45
46
47
48
49
50
51
52
53
54
55
56
57
58
59
60

METHODS

Participants

We tested 20 participants (11 M, 9 F, mean age 29) in the behavioral experiment and 10 participants (5 M, 5 F, mean age 27) in the TMS experiment. According to the standard handedness inventory (Oldfield, 1971) all subjects were right handed. The present study was approved by the local Ethical Committee for human studies and was conducted in compliance with the Helsinki Declaration of 1975, as revised in 1983. All participants gave written informed consent to the experiment.

Visual stimuli

Visual stimuli consisted in 30 pictures of right hands displacing an object (a yellow table-tennis ball). The orientation of the hand in the pictures was 90° , 180° , and -90° with respect to the participant's viewpoint. The contact point with the object (a sphere) was on 5 different points: one on the upper pole of the sphere (indicated as point 0 in Figure 1). The remaining 4 were symmetrically placed along a meridian at 20° and 60° from the vertical axis (points 1, 2, -1 and -2 of Figure 1). The hands were all 90° with respect to the horizontal plane on which the object was positioned. In half of the figures hands touching objects were female hands and in the other half they were male hands balanced across orientation and position. The background of the figures was homogeneous. Stimuli were presented with the e-prime software (Psychology Software Tools Inc.) on a 75 Hz computer screen, with a visual angle of 14° vertically and 19° horizontally.

Motor adaptation procedure

In both experiments every block started with motor adaptation. On the participant's right side a bowl full of dried chickpeas was placed. The spherical shape of the container was chosen in order for the chickpeas to fall back in the center of the bowl after each displacement by the subject. In this way adaptation in each direction consisted in purely "push" or "pull" acts without the need of repositioning the objects upon which the

1
2
3 participant was acting. Participants performed the action of pushing away or pulling in
4
5 the chickpeas in the bowl for 60 seconds. The instruction on which action to perform was
6
7 displayed on the screen for 2 s. If the instruction was "NEAR", they had to pull the
8
9 objects toward themselves; if the instruction was "FAR", subjects had to push the objects
10
11 away. It should be stressed that in order to avoid any access to visual information
12
13 concerning their hands' movements, an opaque screen prevented the participant from
14
15 seeing his/her own right hand during the whole duration of the motor training.
16
17
18

19 **Behavioral experimental protocol**

20
21
22 Subjects sat comfortably on a chair in front of a computer screen wearing earplugs
23
24 and with the head on a chinrest. The experiment was organized in blocks, each composed
25
26 of two phases: first the motor adaptation and then the response phase. After the 60
27
28 seconds of motor activity as described above, a beep-sound informed subjects that the
29
30 training was ended and the test phase was to begin. All the 30 stimuli were presented in
31
32 every block in random order for 500ms. A blank screen with a fixation cross preceded the
33
34 stimulus for 1000 ms and a blank screen with a '?' sign, lasting 1000ms, followed it. The
35
36 task consisted in judging if the hand that they were seeing on the computer screen was
37
38 pushing the objects away or towards him/herself. Subjects were asked to respond as fast
39
40 and as accurately as possible and they had to respond every time even if in doubt.
41
42 Responses were given with both feet using a two-pedal response device. The response
43
44 coding of the left and the right pedals was randomized between subjects. Responses were
45
46 logged only during presentation of the hand picture and on the '?' sign, but not on the
47
48 fixation cross. In this way responses given 1500ms after the onset of the target picture
49
50 were not recorded. The response terminated the picture display, and switching to the next
51
52 trial. Four blocks motor adaptation in each of the 2 directions were repeated in random
53
54 order in the behavioral experiment (8 blocks in total). Therefore 240 (30 trials x 8 blocks)
55
56 single responses were collected from every subject. Moreover, according to this structure,
57
58
59
60

1
2
3 single experimental conditions (i.e. same motor adaptation and same contact point) were
4
5 repeated 24 times in each experiment. Each participant underwent two practice blocks
6
7
8 prior to the real session. For the purpose of data analysis, the “pull” responses were coded
9
10 as -1 and the “push” responses as +1.
11

12 **Preliminary estimate of the duration of the motor-visual aftereffect**

13
14 Aftereffects, the perceptual correlates of adaptation, tend to dissipate in time
15
16 (Thompson & Burr, 2009). Therefore, as a preliminary step, to assess the duration of the
17
18 adaptation effect, we examined in the behavioral experiment the crude responses (pull = -
19
20 1; push = 1) to stimuli with contact point $x = 0$ (ambiguous stimuli - 3rd row in Figure 1)
21
22 as a function of trial position within each block of categorization trials. Ambiguous trials
23
24 were repeated for every subject overall 24 times after each of the 2 adaptation trainings in
25
26 every subject (6 times x 4 blocks). The responses to these 24 trials were ordered
27
28 chronologically (see Figure 2A). Visual inspection showed that a clear adaptation effect
29
30 was present for over the first half of the trials in the form of a bias of the response in the
31
32 direction opposite to the one of the motor activity. This was confirmed statistically by an
33
34 ANOVA using the mean categorization scores as dependent variable and a) the trial
35
36 position, 1-12 or 13-24 and b) the direction of motor adaptation, as independent variables.
37
38 A clear interaction was found between the two factors (trial timing and motor adaptation).
39
40 Post-hoc analysis made with Bonferroni corrected t-tests showed a clear difference
41
42 between categorization responses after push or pull motor adaptation only for the first 12
43
44 responses (all results are shown in Figure 2B). All the subsequent analyses therefore used
45
46 only the first 12 responses, where the adaptation effect was predominant.
47
48
49
50
51
52
53

54 **Behavioral data analysis**

55
56 The main analysis on the behavioral data was conducted by fitting individual
57
58 datasets to independent psychometric functions of the contact point ‘x’ (the five contact
59
60 points are shown in Figure 1). This was done separately for each adaptation direction,

1
2
3 taking into account only the first 12 responses in every block. The psychometric function
4
5 was modeled by means of a normal cumulative distribution function of the contact point
6
7 x , with mean μ and slope σ :

$$10 \quad \Psi(x; \mu, \sigma) = \frac{1 + \operatorname{erf}\left[\frac{(x - \mu)}{\sigma\sqrt{2}}\right]}{2}$$

16 Optimal parameters were computed using a maximum likelihood estimation (MLE)
17
18 procedure (Treutwein & Strasburger, 1999). The maximum of the likelihood function
19
20 $\Lambda(\mu, \sigma)$ was calculated by performing a grid search on a two dimensional lattice defined
21
22 by varying μ from -3 to 3 (step 0.01) and σ from 0 to 4 (step 0.01). Rejecting responses
23
24 given 1500ms after the onset of the target picture, the average data points in each MLE
25
26 procedure was 58, being 47 in the worst case.

31 After each training, the slopes from the two trainings were averaged as
32
33 $\rho = (\sigma_N + \sigma_F)/2$, where σ_N and σ_F represent the slopes of the psychometric functions
34
35 estimated in the “near” and in the “far” directions of motor adaptation. Then the mean
36
37 parameter μ was normalized as $v = \mu/\rho$. Such normalization allowed us to measure the
38
39 aftereffect in units of participant's psychometric function slope and to plot the grand-
40
41 average of all the resulting psychometric functions. The normalization procedure was
42
43 performed assuming that the training would not affect σ , but rather move μ along the
44
45 “contact point” x axis, based on the hypothesis that we have adapted a neural population
46
47 to two opposite and symmetrical tunings of the action observation-execution system. The
48
49 assumption of σ being training-independent was tested by comparing σ values in the 2
50
51 adaptation conditions by means of a paired-sample t-test in the Behavioral Experiment
52
53 ($p=0.29$) and by an ANOVA with 2 within-subject factors: “TMS modality” (3 levels:
54
55 sham, PMv and M1) (all p -values >0.56).
56
57
58
59
60

1
2
3 The parameter v therefore indicates the position of the psychometric functions
4 along a normalized x-axis; the higher, it is the more a subject was biased towards a “pull”
5 categorization response whereas the lower it is, the more a subject is biased towards a
6 “push” categorization response. We used therefore the value of v as dependent variable to
7 characterize the after-effect. The values of v were compared between the two training
8 directions by using a t-test for paired samples.
9
10
11
12
13
14
15
16

17 **TMS experimental protocol**

18
19 In the main experiment, the same experimental paradigm as in the behavioral
20 experiment was used with the addition of a single TMS pulse applied concurrently with
21 the presentation of each target picture. The timing of magnetic stimulation with respect to
22 the target visual presentation was derived from a protocol previously shown to affect
23 adapted populations of neurons in PMv (Cattaneo, Sandrini, & Schwarzbach, 2010).
24
25
26
27
28
29
30
31

32 As in the behavioral experiments, subjects underwent blindfolded motor adaptation
33 in one of the two directions for 60 seconds and were then tested with a series of 30
34 pictures of hand-object interaction. TMS was delivered either as 1) sham stimulation, 2)
35 real stimulation over left PMv or 3) real stimulation over left hand-related M1.
36
37
38
39
40

41 Each of the 3 TMS modalities was delivered in a distinct block. Within each of
42 these blocks the participant performed a total of 8 motor adaptations (4 in each direction).
43 The order of the 3 blocks was randomized in each subject. The experiment was therefore
44 organized as a 3 (TMS conditions) x 2 (direction of motor adaptation) design.
45
46
47
48
49

50 **Stimulation parameters**

51
52 Biphasic TMS pulses were applied through a 70 mm-diameter figure-of-eight coil
53 (model MC-B70, MagVenture Denmark) at the onset of each test picture. A MagPro
54 3100 stimulator (MagVenture Denmark) was used. The coil was attached to a mechanical
55 arm fixed to a tripod and placed tangentially to the skull. Sham stimulation was
56 performed using a sham coil (model MC-P-B70, MagVenture Denmark). Right before
57
58
59
60

1
2
3 the experiment, the individual visible resting motor threshold was assessed, being defined
4 as the lowest stimulation intensity capable of evoking a visible contraction in the relaxed
5 right hand in at least 5 out of 10 consecutive stimuli. The stimulation intensity for the
6 experiment was set to 90% of the individual threshold. The magnetic stimulator was
7 triggered by the e-prime software through the PC's parallel port. Stimuli were delivered
8 at the onset of each of the 30 test pictures in every block. Coil orientation was parallel to
9 the midline with handle pointing backwards for PMv and sham stimulation and 45° to the
10 midline with handle pointing backwards for M1 stimulation.
11
12
13
14
15
16
17
18
19
20
21

22 **Neuronavigation**

23
24 Prior to the experiment, a high-resolution T1-weighted magnetization-prepared
25 rapid gradient echo sequence scan of the brain of each subject was obtained using a
26 MedSpec 4-T MRI scanner (Bruker BioSpin, Ettlingen, Germany) with an 8-channel
27 array head coil. Before the TMS session, the participant's head, TMS coil and
28 participant's 3D reconstruction of brain and scalp from individual MRI images were
29 coregistered in space by means of the BrainVoyager (Brain Innovation BV, The
30 Netherlands) **neuronavigation** system using the Zebris ultrasound tracker (Zebris,
31 Medical GmbH, Germany). The two target locations, left PMv and left M1, were
32 localized by means of macro-anatomical landmarks, namely the anterior bank of the
33 central **sulcus** in correspondence with the hand knob of the precentral gyrus for the left
34 M1 and the portion of precentral gyrus below the intersection of the inferior frontal
35 sulcus with the precentral sulcus for the left PMv (Tomassini et al., 2007). An example of
36 coil positioning in the two active TMS conditions is shown in Figure 3. Sham stimulation
37 was applied midway between the M1 and PMv locations.
38
39
40
41
42
43
44
45
46
47
48
49
50
51
52
53
54
55
56

57 **TMS data analysis**

58 Only the first 12 responses in each series were considered (see behavioral
59 experiment). All fitting procedures and normalization of the data were performed as
60

1
2
3 described for the experimental experiment. The normalized v value was then used as the
4
5
6 dependent variable in an ANOVA with 2 within-subjects factors: TMS condition (3
7
8 levels: Sham, PMv and M1) and adaptation task (2 levels: push and pull). Post-hoc
9
10 comparisons were made with Bonferroni corrected t-tests for paired samples.
11
12
13
14
15
16
17
18
19
20
21
22
23
24
25
26
27
28
29
30
31
32
33
34
35
36
37
38
39
40
41
42
43
44
45
46
47
48
49
50
51
52
53
54
55
56
57
58
59
60

For Peer Review

RESULTS

Behavioral Experiment

The paired-samples t-test showed a clear difference of v between the two adaptation directions ($t=-3.50$; $DF=19$; $p=0.0024$). Importantly, the v values after pull adaptation were smaller than those after push adaptation, being on average -0.106 for the “pull” adaptation and 0.260 for the “push” adaptation (mean psychometric functions and individual data are shown in Figure 4). That indicates that, coherently with the adaptation hypothesis, the aftereffect following motor adaptation was a strong bias towards the action *opposite* to the one that had been trained with values after pull adaptation being smaller than those after push adaptation. The average number of missed trials (response times > 1500 ms) was overall of 4.8% .

TMS experiment

No immediate or delayed side-effects of TMS were observed in any participant. None of them reported significant discomfort from stimulation. The results of the ANOVA showed a main effect of the adaptation task ($F(1, 9)=16.807$, $p=0.0027$) but most importantly we observed a clear interaction of the two factors ‘TMS condition’ and ‘adaptation task’ ($F(2, 18)=6.4205$, $p=0.0079$). The mean values of v are shown in Table 1. Post-hoc analyses using Bonferroni-corrected t-tests showed that a significant difference was present between v values in the sham and M1 TMS conditions (corrected $p=0.015$ and 0.041 , respectively) but no difference was seen in the PMv condition (corrected $p=1.0$). The results are schematized in Figure 5. Thus, we confirmed the results of the behavioral experiment in the sham condition, by showing a perceptual bias towards the opposite action. The stimulation over M1 did not change this pattern. In contrast, TMS over PMv strongly perturbed the aftereffect.

1
2
3 Mean response times were of 784 +/- 76 for Sham stimulation, 797 +/- 50 for M1
4 stimulation and 783 ms +/- 46 for PMv stimulation (error values represent within-subject
5 95% confidence intervals as described in Loftus & Masson, 1994). A one-way ANOVA
6 did not show any significant difference between these values ($F(2, 18)=0.43, p=0.65$).
7
8 The average number of missed trials (response times > 1500 ms) was of 4.3 % in the
9 sham condition, 5.0 % in the M1 condition and 4.8% in the PMv condition.
10
11
12
13
14
15
16
17
18
19
20
21
22
23
24
25
26
27
28
29
30
31
32
33
34
35
36
37
38
39
40
41
42
43
44
45
46
47
48
49
50
51
52
53
54
55
56
57
58
59
60

For Peer Review

DISCUSSION

1
2
3
4
5
6
7
8
9
10
11
12
13
14
15
16
17
18
19
20
21
22
23
24
25
26
27
28
29
30
31
32
33
34
35
36
37
38
39
40
41
42
43
44
45
46
47
48
49
50
51
52
53
54
55
56
57
58
59
60

These results demonstrate for the first time in humans that a population of visuo-motor neurons in the left PMv encode congruent observed and executed actions, and that the brain uses their activity in the process of categorizing the motor significance of another's acts. There are multiple aspects of our results that force these conclusions. The first is the clear adaptation effect obtained via a cross-modal motor-to-visual pathway. The finding of **behavioral** adaptation effects generally identifies the presence in the central nervous system of a population of neurons encoding for the adapted features, as summarized by the aphorism "If you can adapt it, it's there" (Mollon, 1974; Thompson & Burr, 2009). We show here evidence of complex adaptation crossing over between the two modalities of a) voluntary object-directed actions and b) observed hand-object interactions. This phenomenon therefore identifies a population of neurons firing during both execution and observation of congruent transitive acts, characteristics that satisfy the definition of mirror neurons (Cattaneo & Rizzolatti, 2009).

The anatomical location of this population is indicated by TMS on the basis of the TMS-adaptation paradigm (Silvanto *et al.*, 2008). According to this paradigm, the effects of TMS are dependent on the activation state of the stimulated neural populations. The phenomenology of the TMS-adaptation paradigm is extremely replicable and consistent: TMS applied over a part of cortex in which the activity of different neuronal populations has been experimentally manipulated by perceptual adaptation, produces a behavioral reversal of the perceptual cost of adaptation. In other words, if TMS produces the loss or even the reversal of efficiency differences between responses to adapted stimuli and non-adapted stimuli, it localizes the cortical site where neurons have undergone adaptation. The explanation of the TMS-adaptation paradigm at neuronal level is still not clear. The most accepted theory is that TMS would be more effective on less active neurons.

Leaving aside the possible neural mechanisms, it is undeniable that whenever an

1
2
3 interaction between TMS stimulation site and adaptation is found, this localizes the site
4
5 of adaptation in the stimulated region. Our results therefore localize the polymodal visuo-
6
7 motor neuronal population in the left PMv. In this experiment we limited our stimulation
8
9 to the left side on the basis of preceding MRI and TMS data (Kilner et al., 2009; Pobric &
10
11 Hamilton, 2006). There has been recent debate on whether motor-visual adaptation can
12
13 actually take place (Rizzolatti & Sinigaglia, 2010). Cortical adaptation is likely to be
14
15 acting at synaptic level, through synaptic depression (Castellucci & Kandel, 1974;
16
17 Chung, Li, & Nelson, 2002; Zucker, 1972) even though alternative accounts for the
18
19 neural mechanisms of adaptation have been proposed (Carandini & Ferster, 1997). Since
20
21 adaptation is a synaptic phenomenon, it is not surprising that a multimodal neuron
22
23 receiving afferents from both the visual system and the motor system can undergo
24
25 memory phenomena related to firing history from both afferences, ultimately leading to
26
27 cross-modal adaptation which should not affect its firing but rather its synaptic
28
29 efficiency. In any case, in our work, compared to other controversial studies that
30
31 **investigated** cross-modal motor-visual effects (see Rizzolatti & Sinigaglia, 2010), we
32
33 found clear behavioral effects, which make it unequivocal that motor-sensory adaptation
34
35 has indeed occurred. Also, it should be noted that the waning of the effect in time (Figure
36
37 2) is strongly consistent with an adaptation mechanism. It should be stressed here that all
38
39 participants were blindfolded during the motor adaptation. One possible alternative to the
40
41 hypothesis of motor-to-visual adaptation is that the adapting stimulus is actually
42
43 somatosensory feedback. Indeed somatosensation has been demonstrated to play a role in
44
45 the process of motor simulation that takes place in action observation. (Avenanti et al.,
46
47 2007) However in our case the two motor adaptations (push and pull) did not differ
48
49 greatly from the point of view of the kinematics of the repetitive movement, but rather
50
51 differed radically for their motor meaning. It is therefore unlikely that the effect could be
52
53 due to proprioceptive afference.
54
55
56
57
58
59
60

1
2
3
4 It is known that complex aftereffects reflect distributed networks and not single
5 nodes (Mather, Pavan, Campana, & Casco, 2008), and this is probably true also for the
6 present aftereffect since adaptation to seen actions has been demonstrated in the temporal
7 cortex and in the PMv (Barraclough, Keith, Xiao, Oram, & Perrett, 2009; Cattaneo et al.,
8 2010). Thus, we do not claim that left PMv is the only site where this perceptual
9 aftereffect takes place, but it is certainly one node where cross-modal neurons are
10 present. From this point of view it is remarkable that we did not find any effect when
11 stimulating the primary motor cortex. Although monkey single-cell recordings have
12 clearly found neurons responding to observed motor behavior in M1 (Dushanova &
13 Donoghue, 2010), the data in humans is controversial (Kilner & Frith, 2007). One fMRI
14 study showed observation/execution repetition suppression patterns of Blood Oxygen
15 Level-Dependent (BOLD) signal in the ventral premotor cortex only (Kilner *et al.*, 2009)
16 and not in the primary motor cortex. Another experiment (Gazzola & Keysers, 2008)
17 showed a dissociated response in M1 voxels, consisting in increase in BOLD signal
18 during execution and a decrease during observation. On the contrary many TMS studies
19 have shown modulation of M1 activity to action observation (Alaerts, Heremans et al.,
20 2009; Alaerts, Swinnen et al., 2009; Avenanti et al., 2007; Aziz-Zadeh, Maeda, Zaidel,
21 Mazziotta, & Iacoboni, 2002; Borroni & Baldissera, 2008; Cattaneo et al., 2009; Fadiga
22 et al., 1995; Gangitano et al., 2001; Strafella & Paus, 2000; Tremblay, Leonard, &
23 Tremblay, 2008; Urgesi, Moro, Candidi, & Aglioti, 2006). However TMS over M1 is at
24 least in part an index of pre-synaptic signals (Ziemann & Rothwell, 2000) and can reveal
25 information on cortico-cortical input to M1. It is plausible therefore that the motor
26 resonance previously observed with TMS over M1 is a product of mirror activity, but that
27 such resonance is likely to be mediated by cortico-cortical afferents from the ventral
28 premotor cortex (Cattaneo et al., 2005). The present data argue against an active
29 involvement of M1 in action observation. This datum finds support in a recent paper
30
31
32
33
34
35
36
37
38
39
40
41
42
43
44
45
46
47
48
49
50
51
52
53
54
55
56
57
58
59
60

1
2
3 where TMS-induced virtual lesions of M1 did not interfere with motor resonance to
4
5 observed behavior (Avenanti et al., 2007). The authors concluded that the functional
6
7 contribution of M1 to the corticospinal resonance to observed actions is not crucial and
8
9 such resonance probably reflects the functional contribution of other nodes of the action
10
11 mirror system. In addition to these considerations, it should be stressed again that our
12
13 experimental adaptation protocol is planned to induce action-related changes rather than
14
15 movement-related changes. The kinematics of the two adapting trainings of ‘push’ and
16
17 ‘pull’ are very similar, with rhythmic oscillations of the hand on the wrist joint. Only the
18
19 action meaning is opposite between the two trainings. It is therefore not surprising that
20
21 we find stronger effects on PMv neurons rather than M1, considering that most PMv
22
23 neurons represent actions while only some neurons in M1 represent movements
24
25 independently from muscles (Kakei, Hoffman, & Strick, 1999; Umiltà et al., 2008).
26
27
28
29
30

31 Evidence of mirror neuron activity has been demonstrated mostly uni-directionally,
32
33 from vision to action. However it has been argued that in the framework of the mirror
34
35 theory motor to visual information flow is essential for action perception through visual
36
37 predictions (Gazzola & Keysers, 2008; Keysers & Gazzola, 2009; Keysers & Perrett,
38
39 2004; Kilner et al., 2009; Miall, 2003; Schutz-Bosbach & Prinz, 2007). We show here
40
41 that neurons with mirror properties are capable of adaptation to repeated stimuli in the
42
43 opposite, motor-visual direction. These findings should not be confused with the
44
45 numerous sets of data showing a positive correlation between the learning of a new motor
46
47 skill and its recognition in others (as shown for example in Casile & Giese, 2006; for a
48
49 review see Schutz-Bosbach & Prinz, 2007). We tested here simple, fully-acquired
50
51 behaviors like pushing or pulling objects, and we observed the dynamic, moment-by-
52
53 moment changes in the relations between movements in the observer and in the observed,
54
55 rather than the results of complex motor skill learning. The function of adaptation in
56
57 sensory modalities is generally thought to be that of improving perception by changing
58
59
60

1
2
3 gain to avoid saturation in ceiling or floor effects (Thompson & Burr, 2009).

4
5 Accordingly, we show here that the premotor mirror system has indeed perceptual
6
7 functions and it is embedded in a dynamic and constantly fluctuating framework
8
9 depending not only on what we see others do, but also, and very strongly, on what we are
10
11 doing. The fact that action can increase perceptual sensitivity to those events that do not
12
13 share features with what a person is concurrently doing has been suggested previously
14
15 (Schutz-Bosbach & Prinz, 2007). The present data add a straightforward hypothesis on
16
17 the neural mechanisms by which this phenomenon can occur.
18
19

20
21
22 This argument leads us to the second most relevant finding in our work: we show
23
24 that motor adaptation can induce predictable short-lasting changes in how we perceive
25
26 other's actions and this effect is probably achieved by means of controlled manipulation
27
28 of the excitability of premotor mirror neurons. This phenomenon can be assimilated to
29
30 more common visual aftereffects. The mirror mechanism is therefore a potential tool for
31
32 shaping the perception of action. The entity of the aftereffect is considerable. As shown
33
34 in Figure 4 and in the upper panel of Figure 5, when subjects respond at chance level
35
36 after adaptation in one direction, they have a bias in response probability towards "push"
37
38 or "pull" between 14% and 22%. The effects of action on perception have been
39
40 investigated behaviorally in previous works that showed that perception of visual stimuli
41
42 was reduced if presented during the planning of an action compatible with the stimulus
43
44 (Musseler & Hommel, 1997). This effect was originally attributed to brief refractoriness
45
46 of cognitive codes, which are shared by representations of visual stimuli and motor
47
48 responses. However following research has showed that the effect is more likely to be
49
50 attributed to 'perceptual blindness' to stimulus events that share the direction feature with
51
52 the response (Musseler et al., 2001). In another couple of interesting papers it was shown
53
54 that concurrent hand movements positively influenced the participants' capacity to detect
55
56 incongruent hand postures (Miall et al., 2006) or incongruent trajectories (Zwicker et al.,
57
58
59
60

1
2
3 2007). The results of the present experiment are in agreement with the aforementioned
4
5 findings, in the sense that they all indicate the existence of common modules in the brain
6
7 shared by perception and action control (Musseler et al., 2001). The present work
8
9 however addresses specifically whether this shared substrate is able to attribute meaning
10
11 to the observed actions and, most importantly localizes the observation/execution module
12
13 in the ventral portion of the frontal lobe.
14
15

16
17 In conclusion, our data confirm the long-standing hypothesis that **the mirror**
18
19 **mechanism exists** in the human motor system and that they subserve a process of
20
21 classifying the meaning of observed actions. Furthermore, our data imply that the system
22
23 is highly adaptable to increase its sensitivity in quickly evolving social interactions.
24
25
26
27

28
29 Acknowledgments: This work has been realized also thanks to the support from the
30
31 *Provincia Autonoma di Trento* and the *Fondazione Cassa di Risparmio di Trento e*
32
33 *Rovereto*
34
35
36
37
38
39
40
41
42
43
44
45
46
47
48
49
50
51
52
53
54
55
56
57
58
59
60

REFERENCES

- 1
2
3
4
5
6
7
8
9
10
11
12
13
14
15
16
17
18
19
20
21
22
23
24
25
26
27
28
29
30
31
32
33
34
35
36
37
38
39
40
41
42
43
44
45
46
47
48
49
50
51
52
53
54
55
56
57
58
59
60
- Alaerts, K., Heremans, E., Swinnen, S. P., & Wenderoth, N. (2009). How are observed actions mapped to the observer's motor system? Influence of posture and perspective. *Neuropsychologia*, *47*(2), 415-422.
- Alaerts, K., Swinnen, S. P., & Wenderoth, N. (2009). Is the human primary motor cortex activated by muscular or direction-dependent features of observed movements? *Cortex*, *45*(10), 1148-1155.
- Avenanti, A., Bolognini, N., Maravita, A., & Aglioti, S. M. (2007). Somatic and motor components of action simulation. *Curr Biol*, *17*(24), 2129-2135.
- Aziz-Zadeh, L., Maeda, F., Zaidel, E., Mazziotta, J., & Iacoboni, M. (2002). Lateralization in motor facilitation during action observation: a TMS study. *Exp Brain Res*, *144*(1), 127-131.
- Barracough, N. E., Keith, R. H., Xiao, D., Oram, M. W., & Perrett, D. I. (2009). Visual adaptation to goal-directed hand actions. *J Cogn Neurosci*, *21*(9), 1806-1820.
- Blaesi, S., & Wilson, M. (2010). The mirror reflects both ways: action influences perception of others. *Brain Cogn*, *72*(2), 306-309.
- Borroni, P., & Baldissera, F. (2008). Activation of motor pathways during observation and execution of hand movements. *Soc Neurosci*, *3*(3-4), 276-288.
- Carandini, M., & Ferster, D. (1997). A tonic hyperpolarization underlying contrast adaptation in cat visual cortex. *Science*, *276*(5314), 949-952.
- Casile, A., & Giese, M. A. (2006). Nonvisual motor training influences biological motion perception. *Curr Biol*, *16*(1), 69-74.
- Castellucci, V. F., & Kandel, E. R. (1974). A quantal analysis of the synaptic depression underlying habituation of the gill-withdrawal reflex in *Aplysia*. *Proc Natl Acad Sci U S A*, *71*(12), 5004-5008.

- 1
2
3 Cattaneo, L., Caruana, F., Jezzini, A., & Rizzolatti, G. (2009). Representation of goal and
4
5 movements without overt motor behavior in the human motor cortex: a
6
7 transcranial magnetic stimulation study. *J Neurosci*, *29*(36), 11134-11138.
8
9
10 Cattaneo, L., & Rizzolatti, G. (2009). The mirror neuron system. *Arch Neurol*, *66*(5),
11
12 557-560.
13
14
15 Cattaneo, L., Sandrini, M., & Schwarzbach, J. (2010). State-Dependent TMS Reveals a
16
17 Hierarchical Representation of Observed Acts in the Temporal, Parietal, and
18
19 Premotor Cortices. *Cereb Cortex*, DOI: 10.1093/cercor/bhp291.
20
21
22 Cattaneo, L., Voss, M., Brochier, T., Prabhu, G., Wolpert, D. M., & Lemon, R. N.
23
24 (2005). A cortico-cortical mechanism mediating object-driven grasp in humans.
25
26 *Proc Natl Acad Sci U S A*, *102*(3), 898-903.
27
28
29 Chong, T. T., Cunnington, R., Williams, M. A., Kanwisher, N., & Mattingley, J. B.
30
31 (2008). fMRI adaptation reveals mirror neurons in human inferior parietal cortex.
32
33 *Curr Biol*, *18*(20), 1576-1580.
34
35
36 Chung, S., Li, X., & Nelson, S. B. (2002). Short-term depression at thalamocortical
37
38 synapses contributes to rapid adaptation of cortical sensory responses in vivo.
39
40 *Neuron*, *34*(3), 437-446.
41
42
43 Desy, M. C., & Theoret, H. (2007). Modulation of motor cortex excitability by physical
44
45 similarity with an observed hand action. *PLoS ONE*, *2*(10), e971.
46
47
48 Dimberg, U., Thunberg, M., & Elmehed, K. (2000). Unconscious facial reactions to
49
50 emotional facial expressions. *Psychol Sci*, *11*(1), 86-89.
51
52
53 Dinstein, I., Hasson, U., Rubin, N., & Heeger, D. J. (2007). Brain areas selective for both
54
55 observed and executed movements. *J Neurophysiol*, *98*(3), 1415-1427.
56
57
58 Dushanova, J., & Donoghue, J. (2010). Neurons in primary motor cortex engaged during
59
60 action observation. *Eur J Neurosci*, *31*(2), 386-398.

- 1
2
3 Fadiga, L., Fogassi, L., Pavesi, G., & Rizzolatti, G. (1995). Motor facilitation during
4
5 action observation: a magnetic stimulation study. *J Neurophysiol*, 73(6), 2608-
6
7 2611.
8
9
10 Fogassi, L., Ferrari, P. F., Gesierich, B., Rozzi, S., Chersi, F., & Rizzolatti, G. (2005).
11
12 Parietal lobe: from action organization to intention understanding. *Science*,
13
14 308(5722), 662-667.
15
16
17 Gallese, V., Fadiga, L., Fogassi, L., & Rizzolatti, G. (1996). Action recognition in the
18
19 premotor cortex. *Brain*, 119 (Pt 2), 593-609.
20
21
22 Gangitano, M., Mottaghy, F. M., & Pascual-Leone, A. (2001). Phase-specific modulation
23
24 of cortical motor output during movement observation. *Neuroreport*, 12(7), 1489-
25
26 1492.
27
28
29 Gazzola, V., & Keysers, C. (2008). The Observation and Execution of Actions Share
30
31 Motor and Somatosensory Voxels in all Tested Subjects: Single-Subject Analyses
32
33 of Unsmoothed fMRI Data. *Cereb Cortex*.
34
35
36 Glenberg, A. M., Sato, M., & Cattaneo, L. (2008). Use-induced motor plasticity affects
37
38 the processing of abstract and concrete language. *Curr Biol*, 18(7), R290-291.
39
40
41 Grill-Spector, K., Henson, R., & Martin, A. (2006). Repetition and the brain: neural
42
43 models of stimulus-specific effects. *Trends Cogn Sci*, 10(1), 14-23.
44
45
46 Kakei, S., Hoffman, D. S., & Strick, P. L. (1999). Muscle and movement representations
47
48 in the primary motor cortex. *Science*, 285(5436), 2136-2139.
49
50
51 Keller, G. B., & Hahnloser, R. H. (2009). Neural processing of auditory feedback during
52
53 vocal practice in a songbird. *Nature*, 457(7226), 187-190.
54
55
56 Keysers, C., & Gazzola, V. (2009). Expanding the mirror: vicarious activity for actions,
57
58 emotions, and sensations. *Curr Opin Neurobiol*, 19(6), 666-671.
59
60
Keysers, C., & Perrett, D. I. (2004). Demystifying social cognition: a Hebbian
perspective. *Trends Cogn Sci*, 8(11), 501-507.

- 1
2
3 Kilner, J. M., & Frith, C. D. (2007). A possible role for primary motor cortex during
4
5 action observation. *Proc Natl Acad Sci U S A*, *104*(21), 8683-8684.
6
7
8 Kilner, J. M., Neal, A., Weiskopf, N., Friston, K. J., & Frith, C. D. (2009). Evidence of
9
10 mirror neurons in human inferior frontal gyrus. *J Neurosci*, *29*(32), 10153-10159.
11
12
13 Koch, G., Versace, V., Bonni, S., Lupo, F., Gerfo, E. L., Oliveri, M., et al. (2010).
14
15 Resonance of cortico-cortical connections of the motor system with the
16
17 observation of goal directed grasping movements. *Neuropsychologia*. Epub
18
19 August 4.
20
21
22 Kraskov, A., Dancause, N., Quallo, M. M., Shepherd, S., & Lemon, R. N. (2009).
23
24 Corticospinal neurons in macaque ventral premotor cortex with mirror properties:
25
26 a potential mechanism for action suppression? *Neuron*, *64*(6), 922-930.
27
28
29 Lingnau, A., Gesierich, B., & Caramazza, A. (2009). Asymmetric fMRI adaptation
30
31 reveals no evidence for mirror neurons in humans. *Proc Natl Acad Sci U S A*,
32
33 *106*(24), 9925-9930.
34
35
36 Loftus, G. R., & Masson, M. E. J. (1994). Using confidence intervals in within-subject
37
38 designs. *Psychonomic Bulletin & Review*, *1*(4), 476-490.
39
40
41 Maeda, F., Kleiner-Fisman, G., & Pascual-Leone, A. (2002). Motor facilitation while
42
43 observing hand actions: specificity of the effect and role of observer's orientation.
44
45 *J Neurophysiol*, *87*(3), 1329-1335.
46
47
48 Mather, G., Pavan, A., Campana, G., & Casco, C. (2008). The motion aftereffect
49
50 reloaded. *Trends Cogn Sci*, *12*(12), 481-487.
51
52
53 Miall, R. C. (2003). Connecting mirror neurons and forward models. *Neuroreport*,
54
55 *14*(17), 2135-2137.
56
57
58 Miall, R. C., Stanley, J., Todhunter, S., Levick, C., Lindo, S., & Miall, J. D. (2006).
59
60 Performing hand actions assists the visual discrimination of similar hand postures.
Neuropsychologia, *44*(6), 966-976.

- 1
2
3 Mollon, J. D. (1974). After-effects and the brain. *New Scientist*, 61, 479-482.
4
5
6 Mukamel, R., Ekstrom, A. D., Kaplan, J., Iacoboni, M., & Fried, I. (2010). Single-
7
8 Neuron Responses in Humans during Execution and Observation of Actions. *Curr*
9
10 *Biol.*
11
12 Musseler, J., & Hommel, B. (1997). Blindness to response-compatible stimuli. *J Exp*
13
14 *Psychol Hum Percept Perform*, 23(3), 861-872.
15
16
17 Musseler, J., Steininger, S., & Wuhr, P. (2001). Can actions affect perceptual processing?
18
19 *Q J Exp Psychol A*, 54(1), 137-154.
20
21
22 Oldfield, R. C. (1971). The assessment and analysis of handedness: the Edinburgh
23
24 inventory. *Neuropsychologia*, 9(1), 97-113.
25
26
27 Pobric, G., & Hamilton, A. F. (2006). Action understanding requires the left inferior
28
29 frontal cortex. *Curr Biol*, 16(5), 524-529.
30
31
32 Prather, J. F., Peters, S., Nowicki, S., & Mooney, R. (2008). Precise auditory-vocal
33
34 mirroring in neurons for learned vocal communication. *Nature*, 451(7176), 305-
35
36 310.
37
38
39 Rizzolatti, G., & Sinigaglia, C. (2010). The functional role of the parieto-frontal mirror
40
41 circuit: interpretations and misinterpretations. *Nat Rev Neurosci*, 11(4), 264-274.
42
43
44 Schutz-Bosbach, S., & Prinz, W. (2007). Perceptual resonance: action-induced
45
46 modulation of perception. *Trends Cogn Sci*, 11(8), 349-355.
47
48
49 Silvanto, J., Muggleton, N., & Walsh, V. (2008). State-dependency in brain stimulation
50
51 studies of perception and cognition. *Trends Cogn Sci*, 12(12), 447-454.
52
53
54 Stefan, K., Cohen, L. G., Duque, J., Mazzocchio, R., Celnik, P., Sawaki, L., et al. (2005).
55
56 Formation of a motor memory by action observation. *J Neurosci*, 25(41), 9339-
57
58 9346.
59
60

- 1
2
3
4
5
6
7
8
9
10
11
12
13
14
15
16
17
18
19
20
21
22
23
24
25
26
27
28
29
30
31
32
33
34
35
36
37
38
39
40
41
42
43
44
45
46
47
48
49
50
51
52
53
54
55
56
57
58
59
60
- Strafella, A. P., & Paus, T. (2000). Modulation of cortical excitability during action observation: a transcranial magnetic stimulation study. *Neuroreport*, *11*(10), 2289-2292.
- Thompson, P., & Burr, D. (2009). Visual aftereffects. *Curr Biol*, *19*(1), R11-14.
- Tomassini, V., Jbabdi, S., Klein, J. C., Behrens, T. E., Pozzilli, C., Matthews, P. M., et al. (2007). Diffusion-weighted imaging tractography-based parcellation of the human lateral premotor cortex identifies dorsal and ventral subregions with anatomical and functional specializations. *J Neurosci*, *27*(38), 10259-10269.
- Tremblay, F., Leonard, G., & Tremblay, L. (2008). Corticomotor facilitation associated with observation and imagery of hand actions is impaired in Parkinson's disease. *Exp Brain Res*, *185*(2), 249-257.
- Treutwein, B., & Strasburger, H. (1999). Fitting the psychometric function. *Percept Psychophys*, *61*(1), 87-106.
- Turella, L., Erb, M., Grodd, W., & Castiello, U. (2009). Visual features of an observed agent do not modulate human brain activity during action observation. *Neuroimage*, *46*(3), 844-853.
- Umiltà, M. A., Escola, L., Intskirveli, I., Grammont, F., Rochat, M., Caruana, F., et al. (2008). When pliers become fingers in the monkey motor system. *Proc Natl Acad Sci U S A*, *105*(6), 2209-2213.
- Urgesi, C., Candidi, M., Fabbro, F., Romani, M., & Aglioti, S. M. (2006). Motor facilitation during action observation: topographic mapping of the target muscle and influence of the onlooker's posture. *Eur J Neurosci*, *23*(9), 2522-2530.
- Urgesi, C., Moro, V., Candidi, M., & Aglioti, S. M. (2006). Mapping implied body actions in the human motor system. *J Neurosci*, *26*(30), 7942-7949.
- Watkins, K. E., Strafella, A. P., & Paus, T. (2003). Seeing and hearing speech excites the motor system involved in speech production. *Neuropsychologia*, *41*(8), 989-994.

- 1
2
3 Wicker, B., Keysers, C., Plailly, J., Royet, J. P., Gallese, V., & Rizzolatti, G. (2003).
4
5 Both of us disgusted in My insula: the common neural basis of seeing and feeling
6
7 disgust. *Neuron*, 40(3), 655-664.
8
9
10 Ziemann, U., & Rothwell, J. C. (2000). I-waves in motor cortex. *J Clin Neurophysiol*,
11
12 17(4), 397-405.
13
14
15 Zucker, R. S. (1972). Crayfish escape behavior and central synapses. II. Physiological
16
17 mechanisms underlying behavioral habituation. *J Neurophysiol*, 35(5), 621-637.
18
19
20 Zwickel, J., Grosjean, M., & Prinz, W. (2007). Seeing while moving: measuring the
21
22 online influence of action on perception. *Q J Exp Psychol (Colchester)*, 60(8),
23
24 1063-1071.
25
26
27 Zwickel, J., Grosjean, M., & Prinz, W. (2010a). On interference effects in concurrent
28
29 perception and action. *Psychol Res*, 74(2), 152-171.
30
31
32 Zwickel, J., Grosjean, M., & Prinz, W. (2010b). What part of an action interferes with
33
34 ongoing perception? *Acta Psychol (Amst)*, 134(3), 403-409.
35
36
37
38
39
40
41
42
43
44
45
46
47
48
49
50
51
52
53
54
55
56
57
58
59
60

FIGURE LEGENDS

Figure 1 - Visual stimuli employed in the two experiments. The full set of female actor-stimuli in the 3 different orientations and 5 different contact points is shown.

Figure 2 - Time course of adaptation effect. **A** - Mean values of the crude ratings for the ambiguous stimuli (contact point $x = 0$) in all 20 participants to the behavioral experiment sorted by order of appearance in the trials series. The shading represents \pm SEM. **B** - results of the ANOVA between mean crude ratings of the first half of trials and the second half. The error bars indicate 95% confidence intervals.

Figure 3 - Localization on MRI scans of the left hand-related primary motor cortex (panel A) and of the left ventral premotor cortex (panel B) in one representative subject. The red beam represents the focus of the magnetic pulse.

Figure 4 - Results of the behavioral experiment. **Left:** grand-average of all the individual psychometric functions in the two adaptation conditions. The contact point x is expressed in units of participant's psychometric function slope ρ . The dotted vertical lines represent v mean values and horizontal error bars represent 95% confidence intervals. A shift of the psychometric curve towards the left indicates an increased probability of categorizing the stimulus as "push". Vice-versa a shift to the right indicates a bias in favor of "pull" responses. **Right:** individual values of v for all 20 participants. Note that v indicates the stimulus value for which a participant is likely to respond at chance level. A negative value of v indicates an increased probability of categorizing the stimulus as "push". Vice-versa a positive value indicates a bias towards "pull" responses. The p -value refers to pairwise t-test.

Figure 5 - Results of TMS experiment. **Left:** grand-average of all the individual psychometric functions in the two adaptation conditions. The contact point x is expressed in units of participant's psychometric function slope ρ . The dotted vertical lines represent

1
2
3 v average values and horizontal error bars represent 95% confidence intervals. A shift of
4
5
6 the psychometric curve towards the left indicates an increased probability of categorizing
7
8 the stimulus as “push”. Vice-versa a shift to the right indicates a bias in favor of “pull”
9
10 **responses**. **Right:** individual values of v for all 10 participants. The data for the 3
11
12 different TMS conditions are given. Note that v indicates the stimulus value for which a
13
14 participant is likely to respond at chance level. A negative value of v indicates an
15
16 increased probability of categorizing the stimulus as “push”. Vice-versa a positive value
17
18 indicates a bias towards “pull” responses. The p-values refer to significant Bonferroni
19
20 corrected p-values of pairwise t-tests.
21
22
23
24
25
26
27
28
29
30
31
32
33
34
35
36
37
38
39
40
41
42
43
44
45
46
47
48
49
50
51
52
53
54
55
56
57
58
59
60

TABLE 1

Adaptation	TMS modality		
	Sham	PMv	M1
pull	-0.052	0.298	-0.040
push	0.523	0.236	0.439

Table 1: v values in the TMS experiment.

For Peer Review

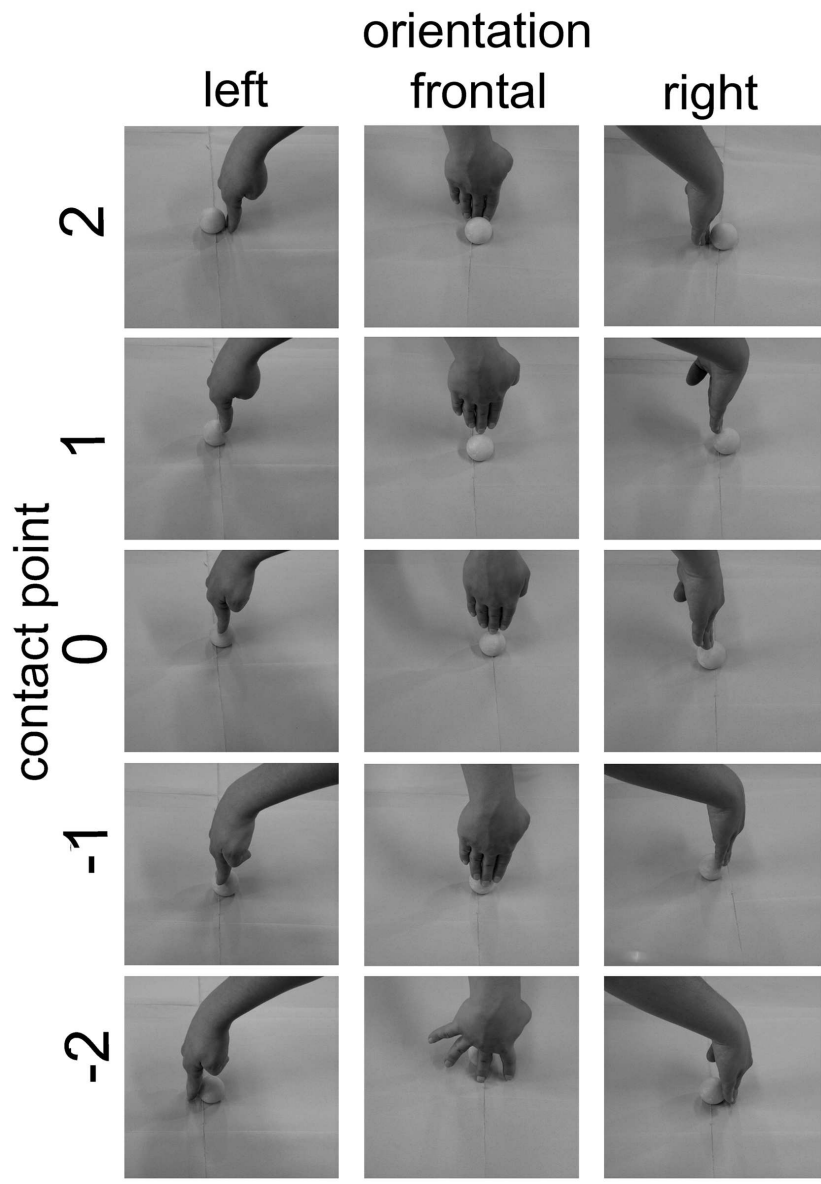


Figure 1 - Visual stimuli employed in the two experiments. The full set of female actor-stimuli in the 3 different orientations and 5 different contact points is shown. 87x124mm (500 x 500 DPI)

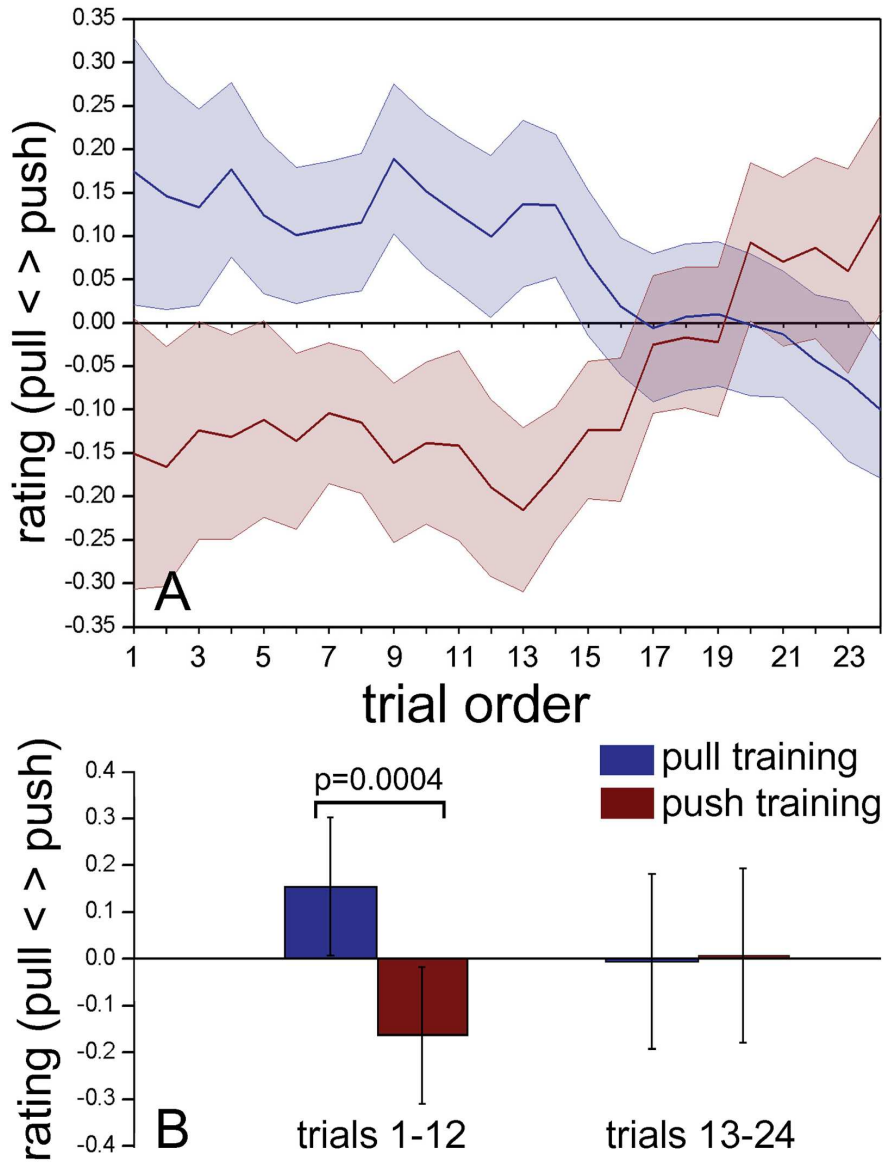


Figure 2 - Time course of adaptation effect. A - Mean values of the crude ratings for the ambiguous stimuli (contact point $x = 0$) in all 20 participants to the behavioral experiment sorted by order of appearance in the trials series. The shading represents \pm SEM. B - results of the ANOVA between mean crude ratings of the first half of trials and the second half. The error bars indicate 95% confidence intervals.
87x112mm (500 x 500 DPI)

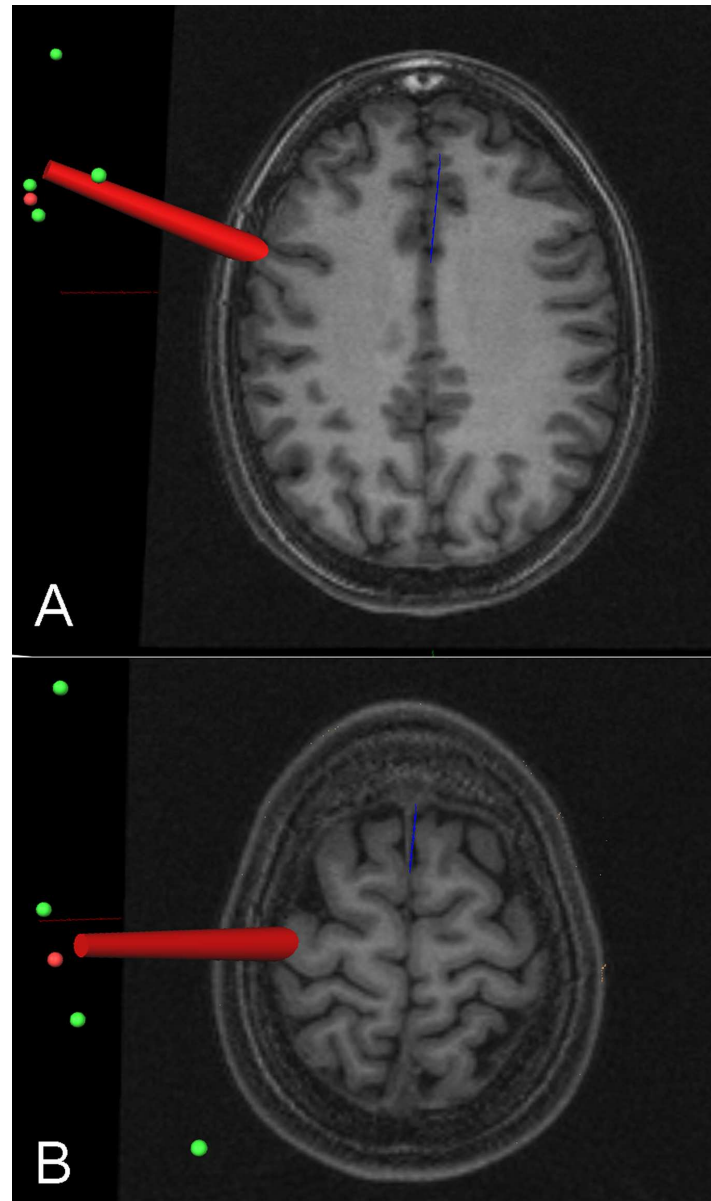


Figure 3 – Localization on MRI scans of the left hand-related primary motor cortex (panel A) and of the left ventral premotor cortex (panel B) in one representative subject. The red beam represents the focus of the magnetic pulse.

86x146mm (400 x 400 DPI)

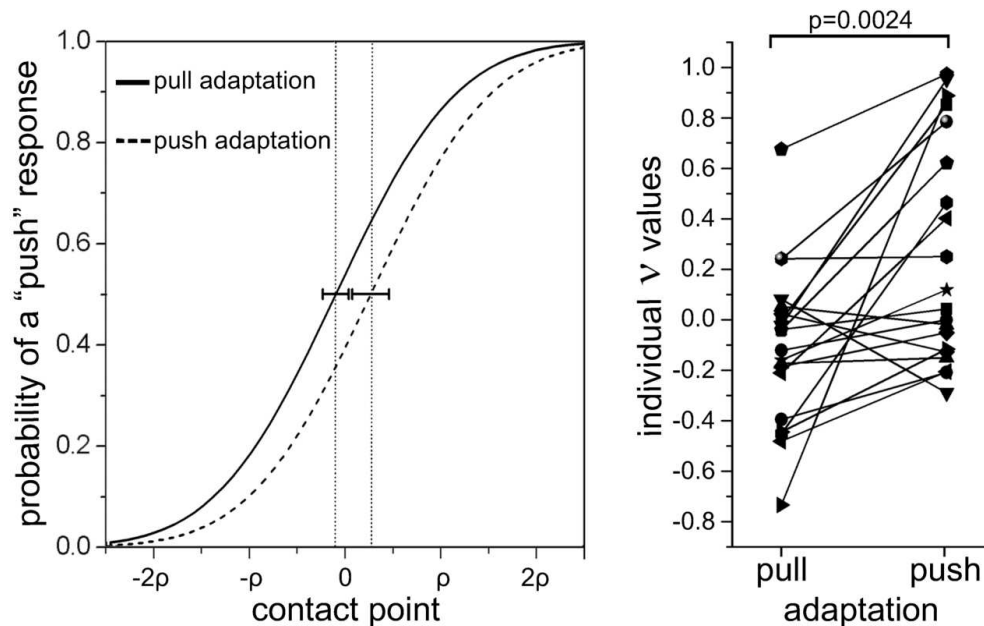


Figure 4 - Results of the behavioral experiment. Left: grand-average of all the individual psychometric functions in the two adaptation conditions. The contact point x is expressed in units of participant's psychometric function slope ρ . The dotted vertical lines represent v mean values and horizontal error bars represent 95% confidence intervals. A shift of the psychometric curve towards the left indicates an increased probability of categorizing the stimulus as "push". Vice-versa a shift to the right indicates a bias in favor of "pull" responses. Right: individual values of v for all 20 participants. Note that v indicates the stimulus value for which a participant is likely to respond at chance level. A negative value of v indicates an increased probability of categorizing the stimulus as "push". Vice-versa a positive value indicates a bias towards "pull" responses. The p-value refers to pairwise t-test.

54x34mm (600 x 600 DPI)

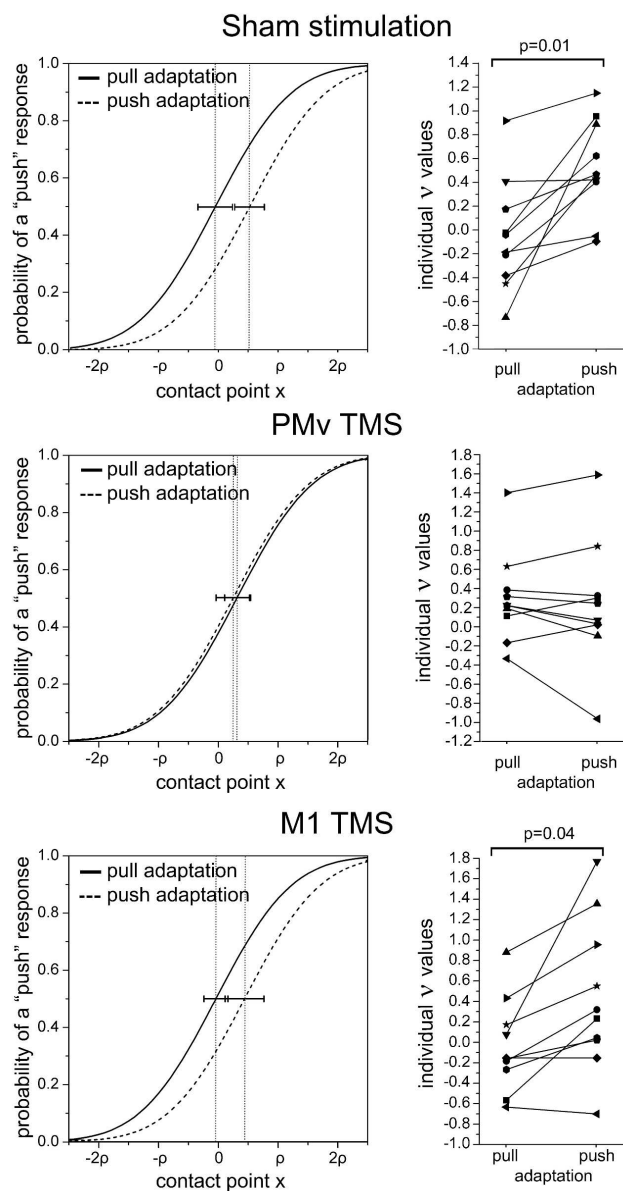


Figure 5 - Results of TMS experiment. Left: grand-average of all the individual psychometric functions in the two adaptation conditions. The contact point x is expressed in units of participant's psychometric function slope ρ . The dotted vertical lines represent v average values and horizontal error bars represent 95% confidence intervals. A shift of the psychometric curve towards the left indicates an increased probability of categorizing the stimulus as "push". Vice-versa a shift to the right indicates a bias in favor of "pull" responses. Right: individual values of v for all 10 participants. The data for the 3 different TMS conditions are given. Note that v indicates the stimulus value for which a participant is likely to respond at chance level. A negative value of v indicates an increased probability of categorizing the stimulus as "push". Vice-versa a positive value indicates a bias towards "pull" responses. The p-values refer to significant Bonferroni corrected p-values of pairwise t-tests.

163x308mm (600 x 600 DPI)

1
2
3
4
5
6
7
8
9
10
11
12
13
14
15
16
17
18
19
20
21
22
23
24
25
26
27
28
29
30
31
32
33
34
35
36
37
38
39
40
41
42
43
44
45
46
47
48
49
50
51
52
53
54
55
56
57
58
59
60

For Peer Review